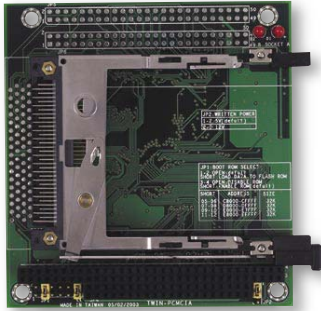


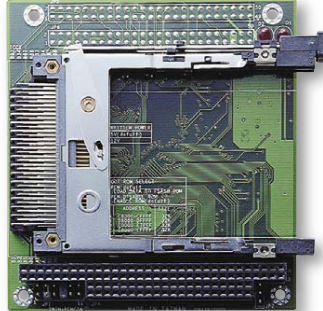
ICOP-1910

One Slot PCMCIA Module



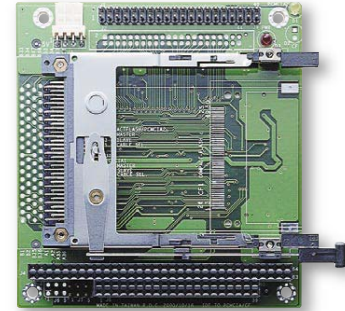
ICOP-1920

Two Slots PCMCIA Module



ICOP-1912-ATA

One Slot PCMCIA to IDE Module



1

Mity/Tiny Module

2

PC/104 Module

3

3.5"/ATX Module

4

Half-Size Module

5

Peripheral Module

6

Accessories

Specifications

Features	Support one 5V PCMCIA slot Support read/write Flash card for FFS II and TFFS Support bootable function from SRAM card, ATA Flash card, and ATA hard drives
Chipset	RICOH RF5C396L 16-bit data bus
BIOS	Programmable 32KB SMD type bootEEPROM BIOS
Bus	PC/104 standard compliant
I/O	Comply with PCMCIA v2.10 and JEIDA 4.1 Specification
Status Indicators	PCMCIA Active LED x2
Connectors	68-pin slot for Standard PC card of Type I/II x1 50-pin header for connection to extension boxes x2
Power Requirement	Single Voltage +5V @70mA
Weight	80g
Board Size	90 x 96mm (3.54 x 3.77 inches)
Operating Temperature	0°C ~ +55°C

Packing List:

- ICOP-1910 x1
- Screw Kit x1

Specifications

Features	Support two 5V Type I/II cards or one 5V Type III card Bootable from Linear Flash card, ATA Flash card and ATA hard drives
Chipset	RICOH RF5C396L 16-bit data bus
BIOS	Programmable 32KB SMD-type boot EEPROM BIOS
Bus	PC/104 standard compliant
I/O	Comply with PCMCIA v2.10 and JEIDA 4.1 Specification
Status Indicators	PCMCIA Active LED x2
Connectors	68-pin slot for Standard PC card of Type I/II/III x2
Power Requirement	Single Voltage +5V @70mA
Weight	93g
Board Size	90 X 96mm (3.54 X 3.77 inches)
Operating Temperature	0°C ~ +55°C

Packing List:

- ICOP-1920 x1
- Screw Kit x1

Specifications

Features	ATA to Standard IDE interface Support one 5V PCMCIA slot Support Type I/II ATA Flash, ATA HDD, and CF card (an adaptor is required)
Bus	PC/104 standard compliant
I/O	Comply with PCMCIA v2.10 and JEIDA 4.1 Specification
Status Indicators	Power LED PCMCIA Active LED
Connectors	68-pin slot for Standard PC card of Type I/II x1 2.54mm 40-pin header for IDE x1 4-pin power connector x1
Power Requirement	Single Voltage +5V @70mA
Weight	75g
Board Size	90 X 96mm (3.54 X 3.77 inches)
Operating Temperature	0°C ~ +70°C

Packing List:

- ICOP-1912-ATA x1
- Screw Kit x1